

WeatherFront

User Guide

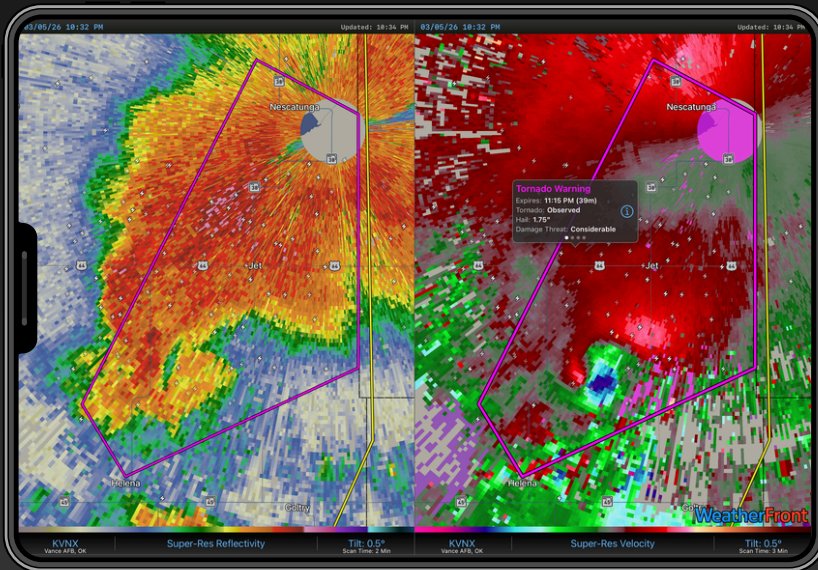
Your one-stop shop for weather data on a mobile and desktop device.

Quick Links

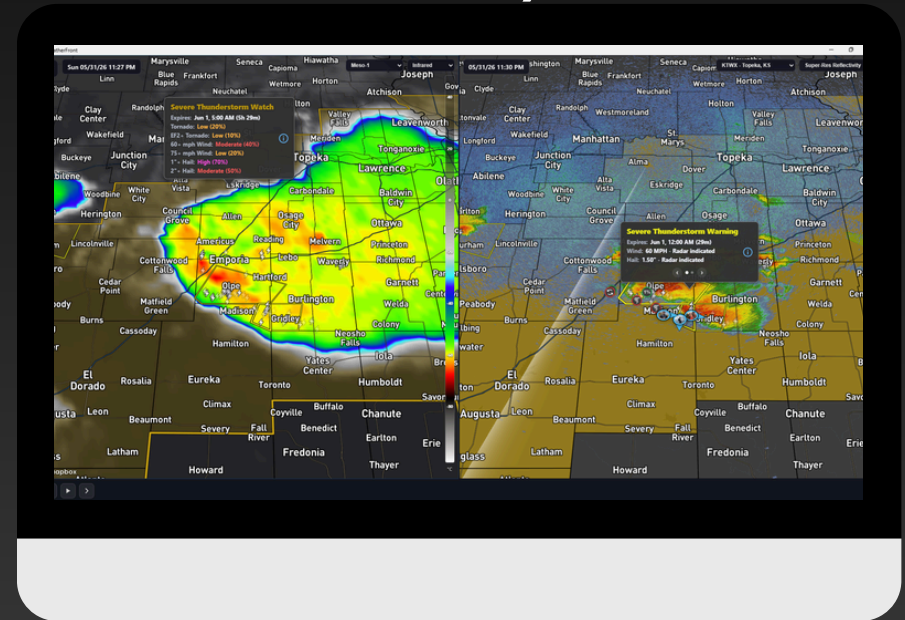
[App Overview](#)

[Account Set Up](#)

Tutorials (Click to Access)



iOS



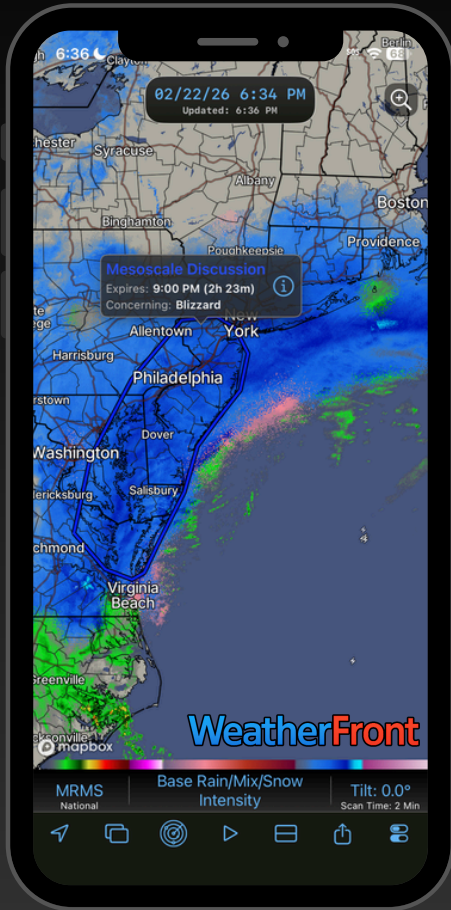
Web

Android/MacOS/PC/Linux: Coming soon!

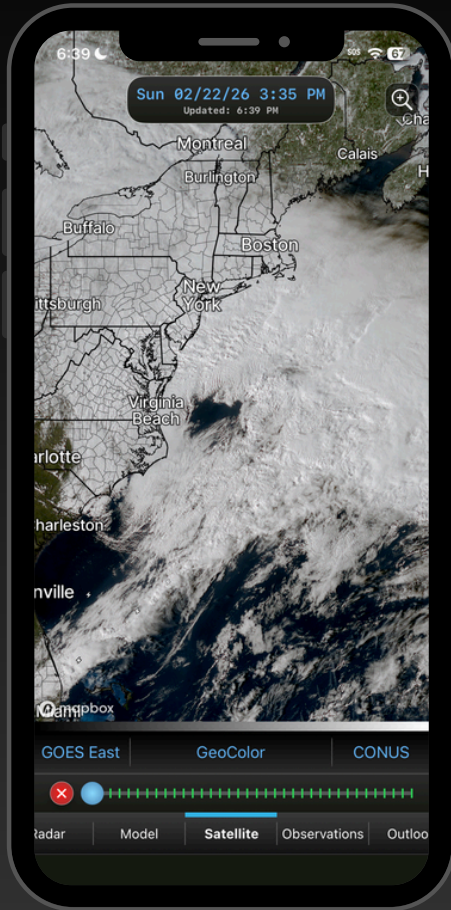
App Overview

WeatherFront

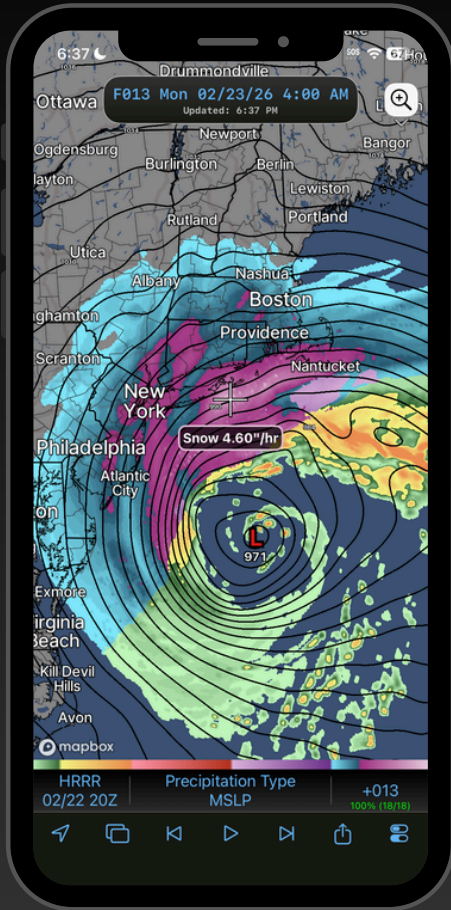
A FREE Professional Weather App



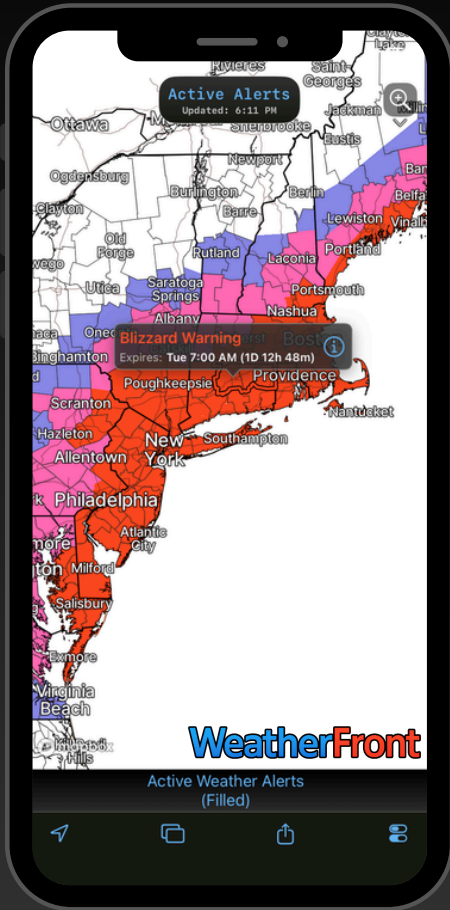
Radar



Satellite



Models



NWS Alerts



WeatherFront

Your one-stop shop for weather data on a mobile device

and more...

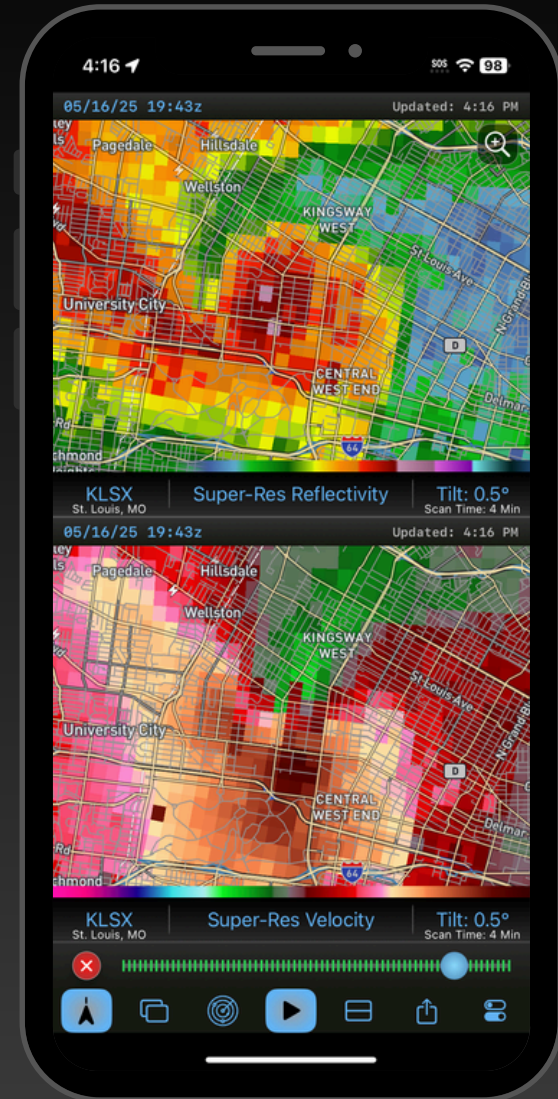
FREE Radar Features **WF**

- National Radar Mosaic (MRMS)
- US & Canadian Radars
- Rain/Mix/Snow Intensity Algorithm
- Dual-Pane
- **Press and hold to switch to the nearest radar**
- 24-hour loops
- Draw, Measure, Sample Tools

Plus...

Access 80+ MRMS algorithms with a subscription to WF Advanced!

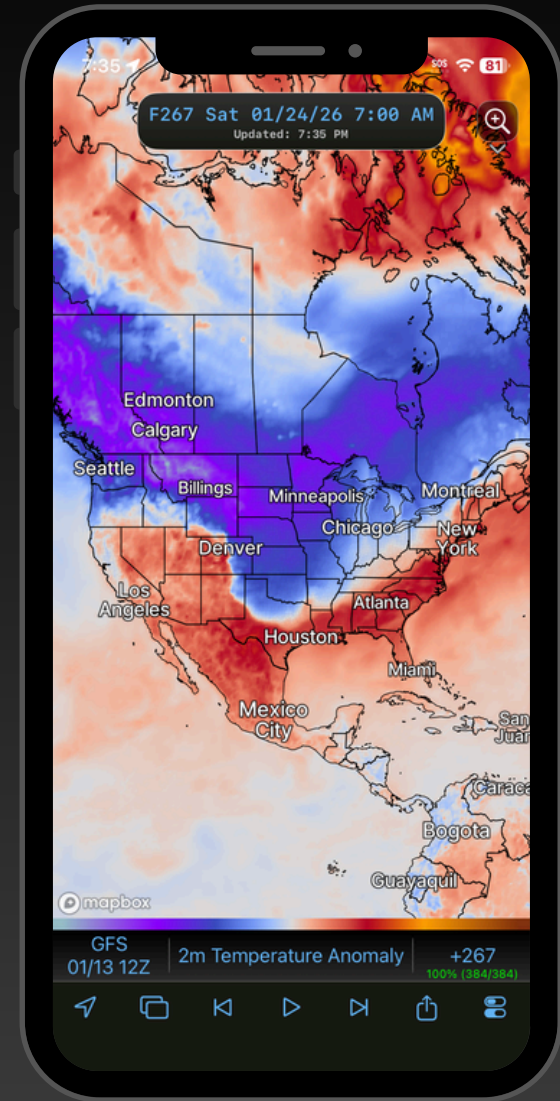
WeatherFront



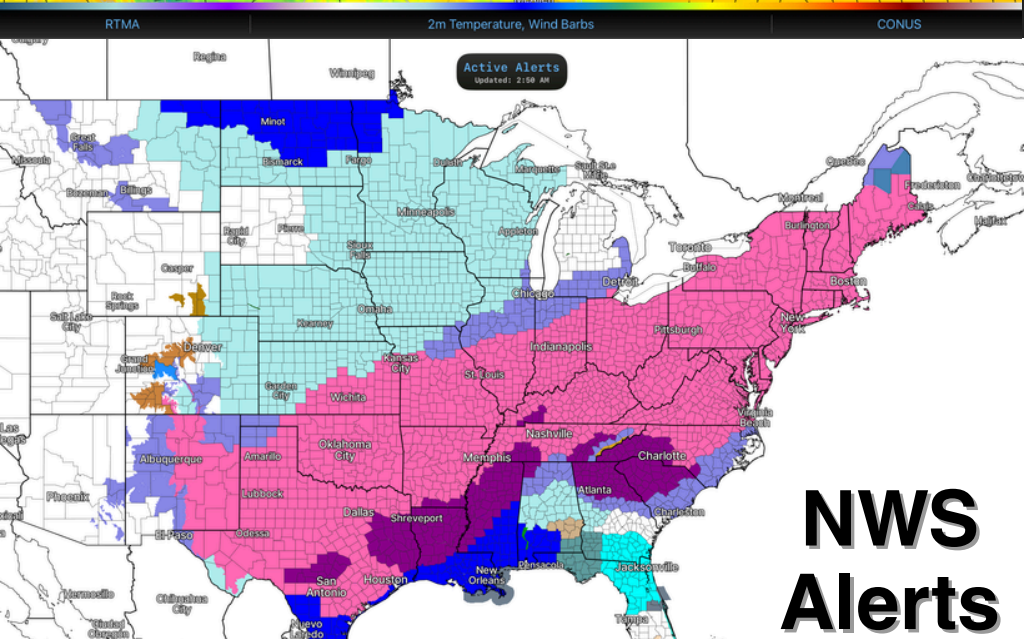
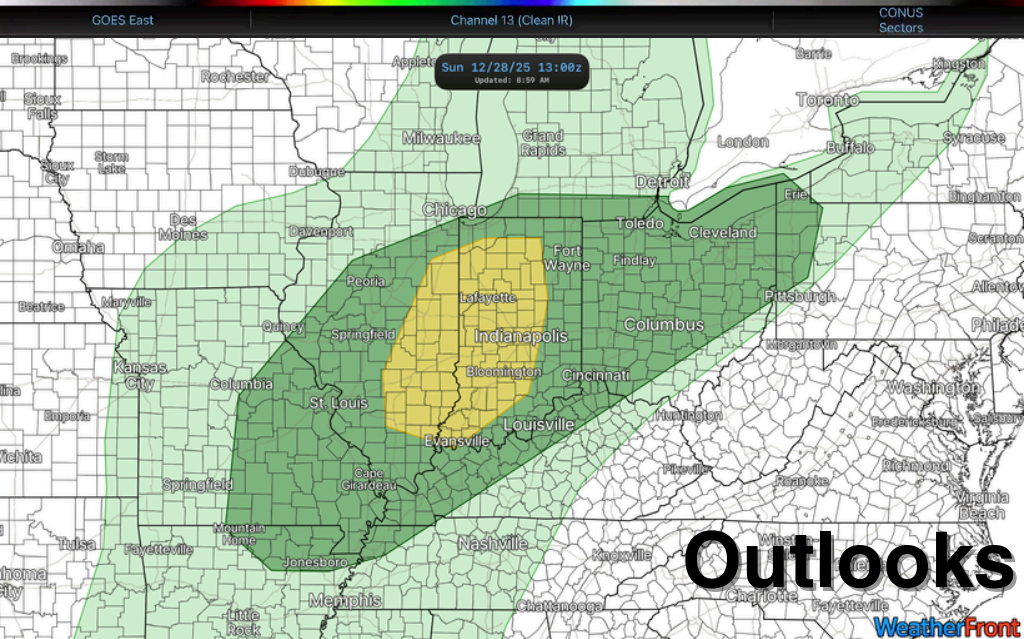
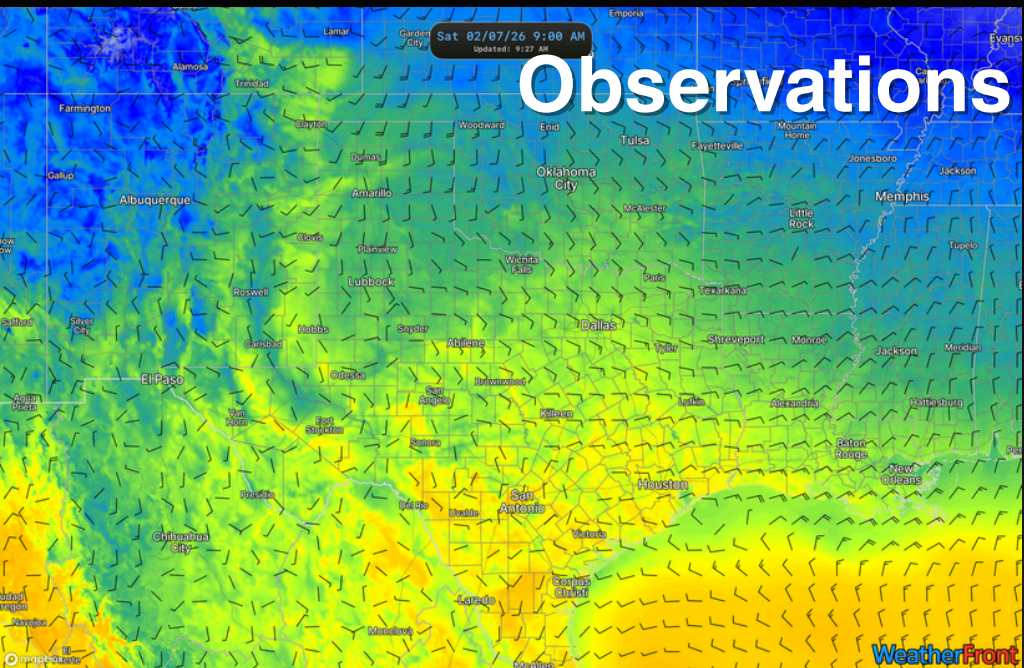
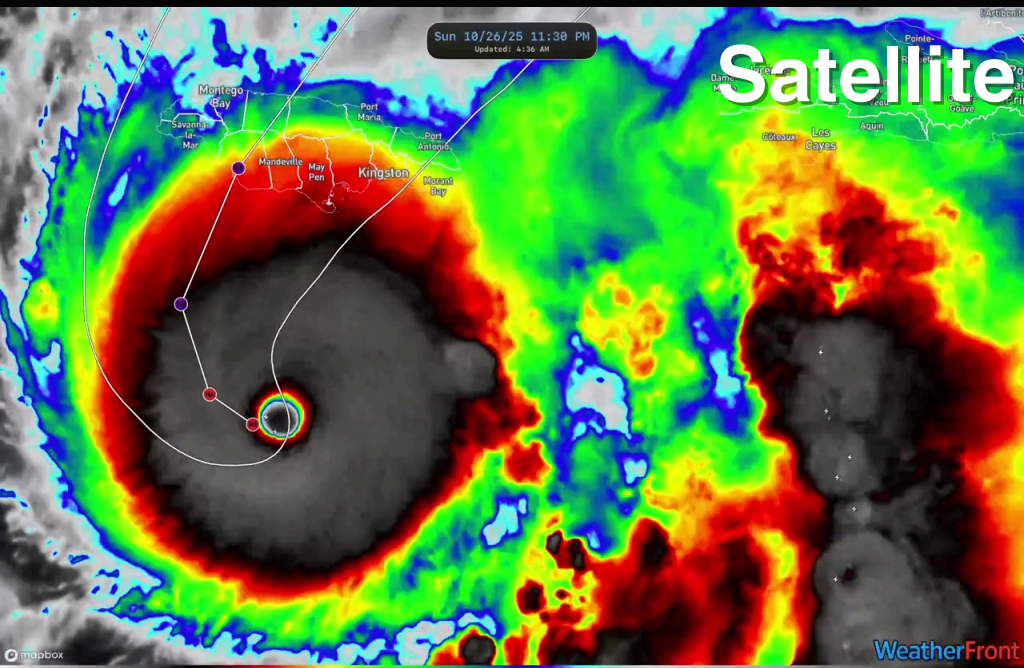
Model Features



- Model viewing optimized for a mobile device
- Dynamic zooming and scrolling
- 25+ models & ensembles
- Model- and model-run comparison
- **Press and hold to generate a model sounding**
- Mesoanalysis Sounding Tool on Radar and Satellite Tabs



Other Products



Forecast Discussion	Categ.	Tornado	Wind	Hail
D1 - Sun 12/28 Slight		5%	15%	0%
D2 - Mon 12/29 No Thunder				
D3 - Tue 12/30 No Thunder				

Convective Outlook

Active Weather Alerts (Filled)

WeatherFront

iOS App Tutorial

WeatherFront

Program Layout



1. Navigation Menu

- A - Display GPS Location
- B - Data Tab Selector
- C - Radar Selector
- D - Play/Loop
- E - Dual Pane
- F - Export
- G - Settings

2. Product Menu

- H - Source Selector
- I - Product Selector
- J - Tilt/Hour/Domain



3. App Tools Menu

- Measure
- Draw
- Sample
- Mesoanalysis
- Sounding Tool
- Toggle
- Route Planning

Navigation Menu



A



B



C



D



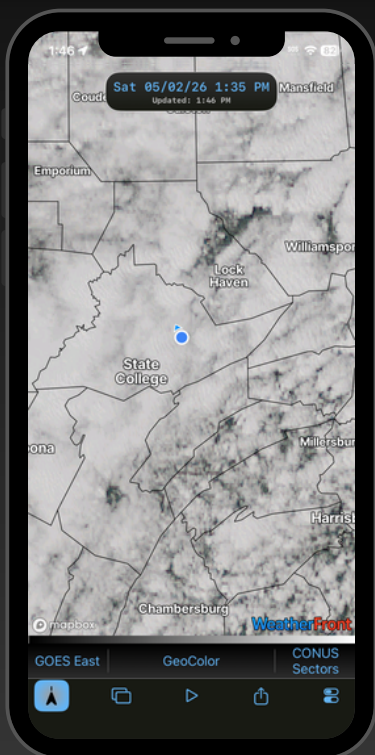
E



F

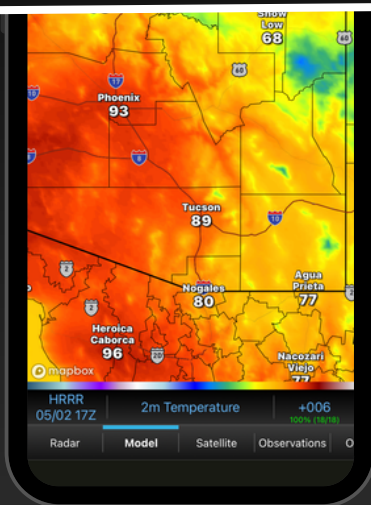


G



A - GPS Arrow

1 click for GPS dot
2 clicks for arrow



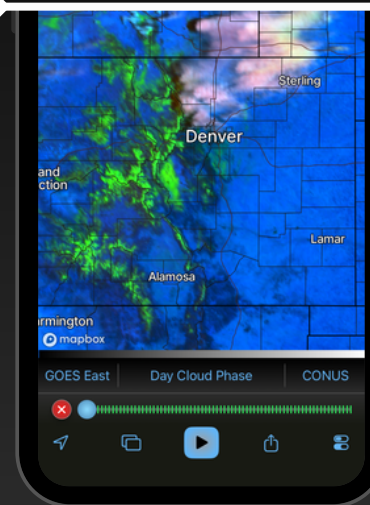
B - Overlapping Rectangles

Switch between the Radar, Models, Observations, Outlooks, and Mapping tabs



C - Radar Selector

Activate to view radar locations



D - Play/Loop

Loop through data automatically or manually scroll back and forth

Navigation Menu



A



B



C



D



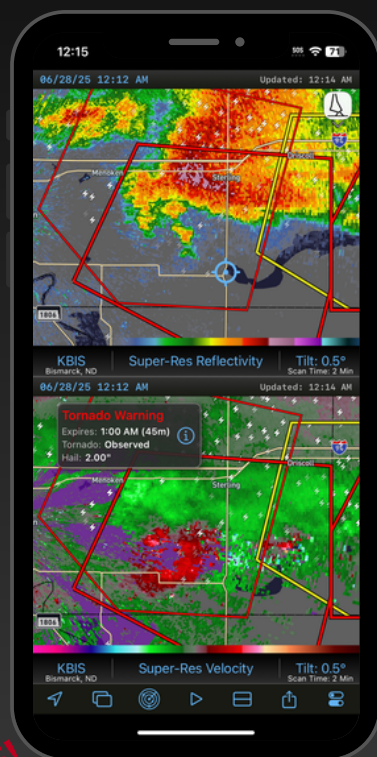
E



F

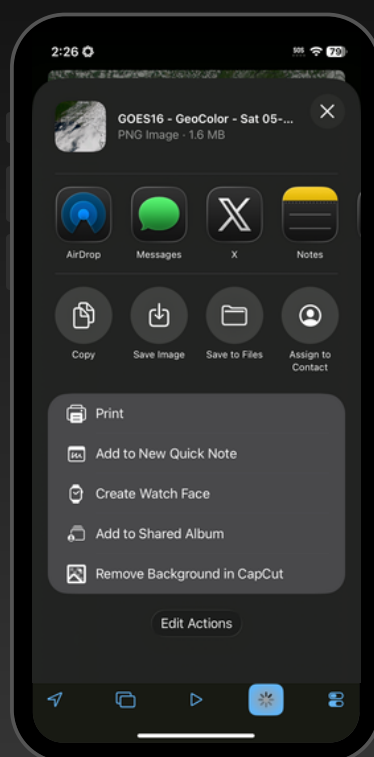


G



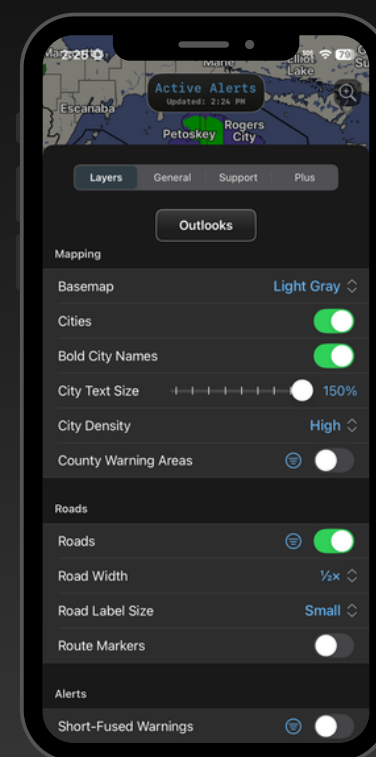
E - Dual Pane

View multiple radar variables in portrait or landscape mode



F - Export

Save an image or loop to your phone & export to any app



G - Settings Menu

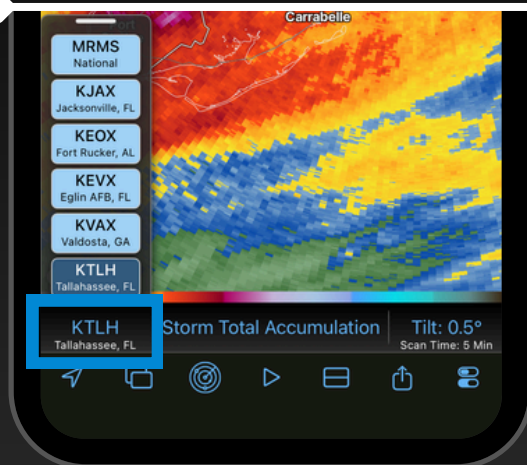
Customize settings & subscribe to WF

FREE
in WFL

Product Menu



Source Selector



Radar Tab:

- Select MRMS or a local radar
- List includes radars closest to the map center
- MRMS will always be available at the top
- Alternatively, long press anywhere on the map to switch to the closest radar



Model Tab:

- Select a model (1 click) or model run (2 clicks)
- Activate Model Comparison or Model Run Comparison by clicking the buttons at the top of each list



Observations Tab:

- **HRRR Analysis:** Includes the first hour of the last 48 runs of the HRRR model.
- **RTMA:** Real-time mesoanalysis data
- **Observed Soundings:** View data from NWS upper-air launches

Product Menu



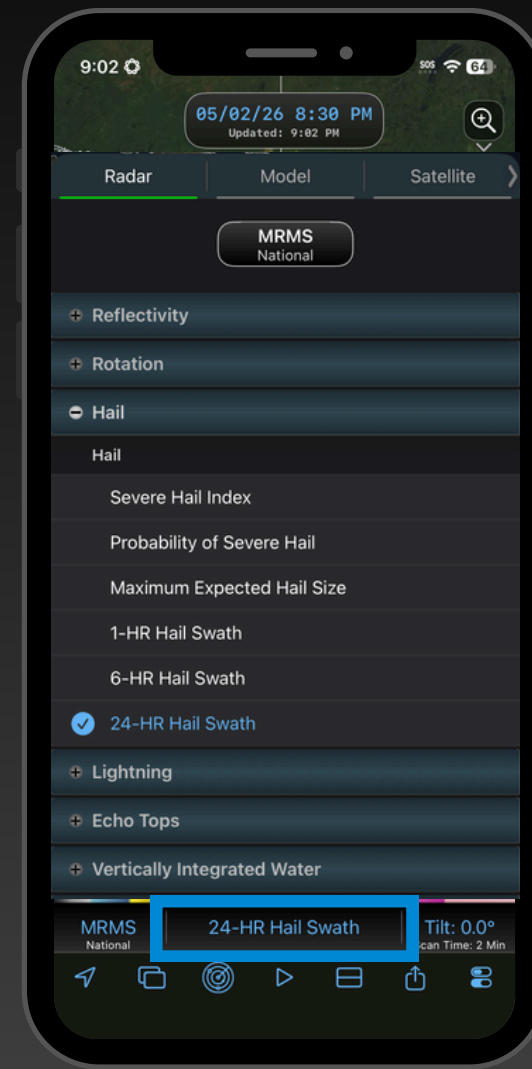
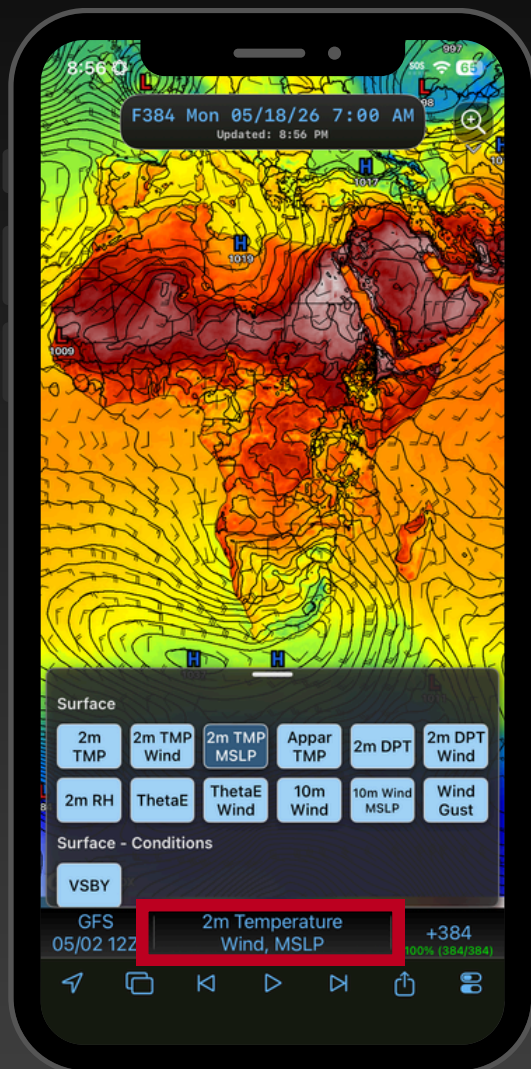
Product Selector

Full Product Menu

- Single Click on the current product to display a full product menu
- Navigate all the products in WeatherFront with ease

Product Selection Quick Menu

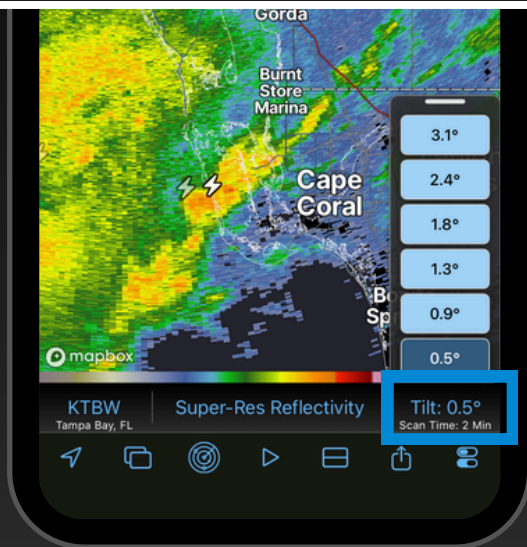
- Long press on the current product to display a quick menu
- Easily swap between radar products, model variables, or satellite channels



Product Menu

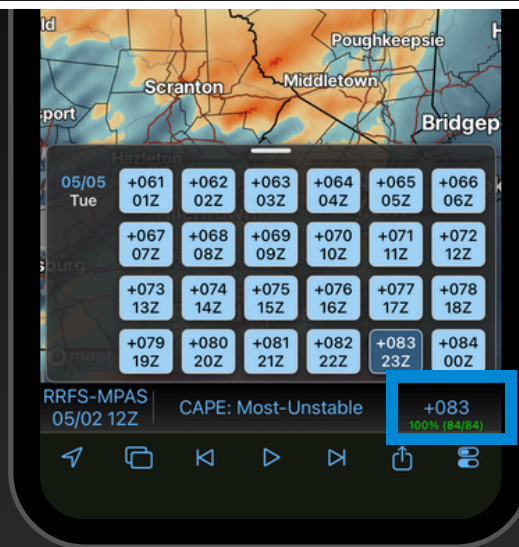


Tilt / Hour / Domain



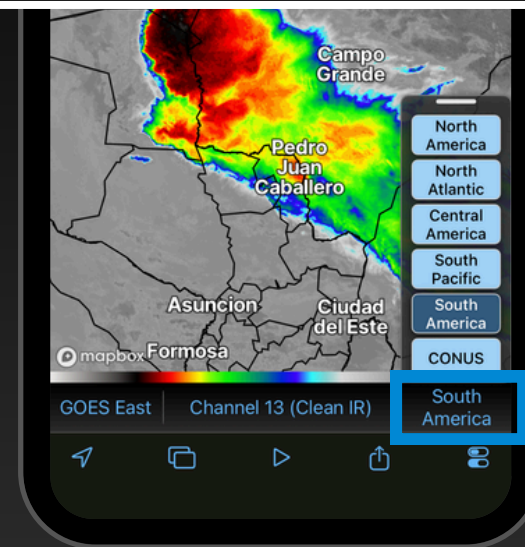
Radar Tab:

- Choose a radar elevation angle/tilt for any local NWS, Canadian, or international radar site.
 - All elevation angles up to 3.1° are available!



Model Tab:

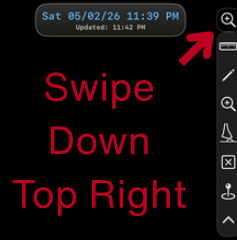
- Manually select a model output hour:
 - Sorted by day/date
 - Shows the model run hour (+003 = 3rd hour)
 - Lists the valid time in UTC/Zulu



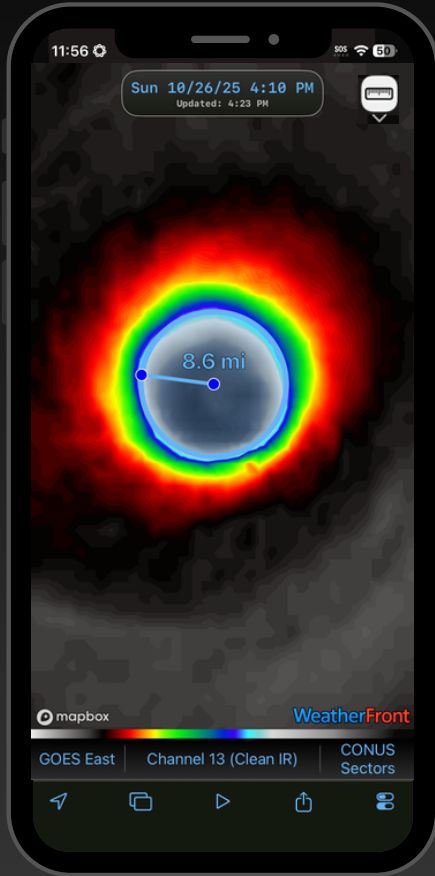
Satellite Tab:

- Select the satellite domain:
 - North, Central, & South America
 - North Atlantic & South Pacific
 - CONUS & CONUS Sectors
 - Meso-1 & Meso-2

App Tools Menu



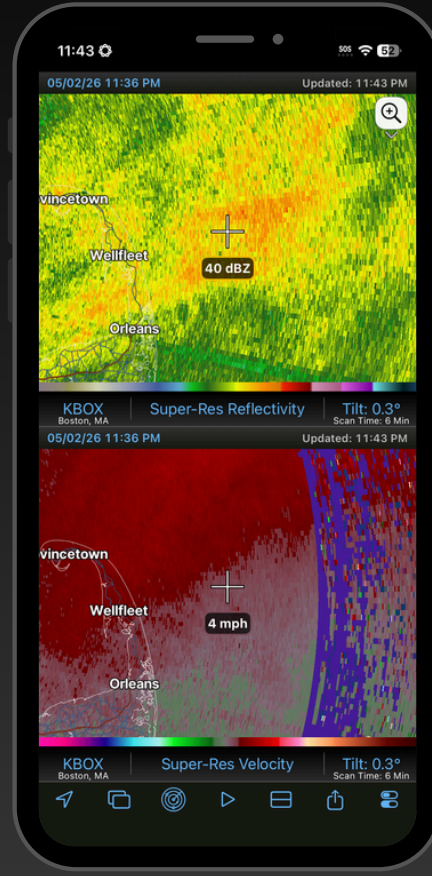
Measure



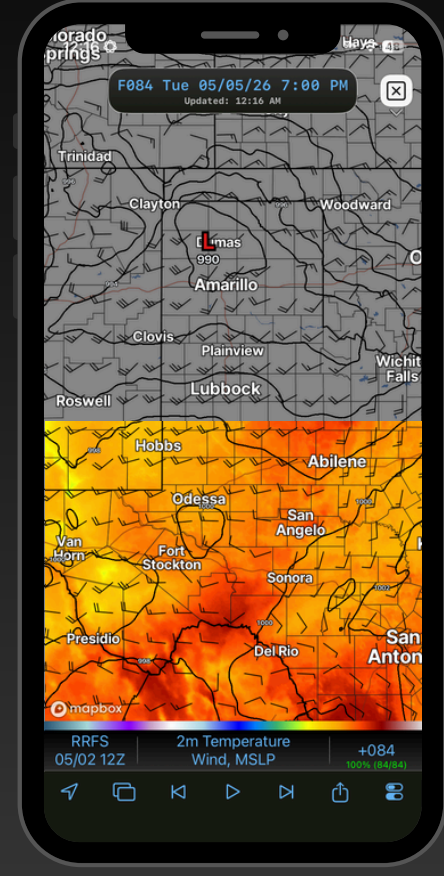
Draw



Sample



Toggle



Measure distance between two objects by dragging your finger along the screen.

Choose from a full palette of colors as you annotate storm motion or highlight important features

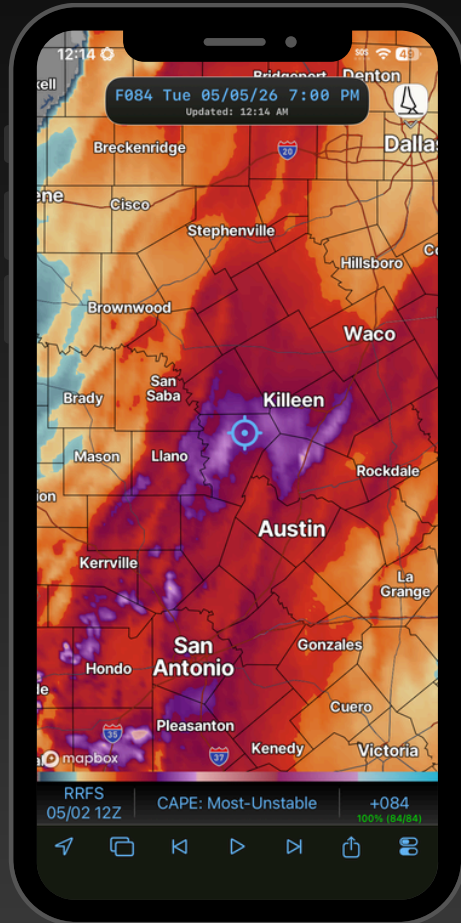
Turn on the magnifying glass to sample data values on radar, satellite, and model data

Toggle off the plotted data to make your basemap easier to see or to assist with navigation

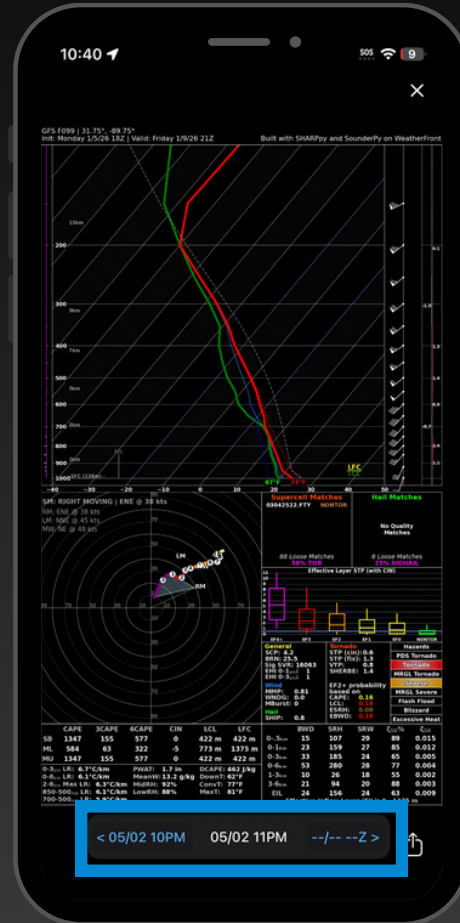


App Tools Menu

Mesoanalysis Sounding Tool



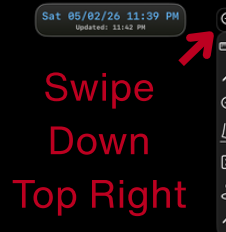
1. Activate by selecting the icon that looks like a sounding
2. Long press on the map while viewing radar, satellite, observations, or outlooks
3. Sample the near-storm environment & view a sounding in portrait or landscape mode



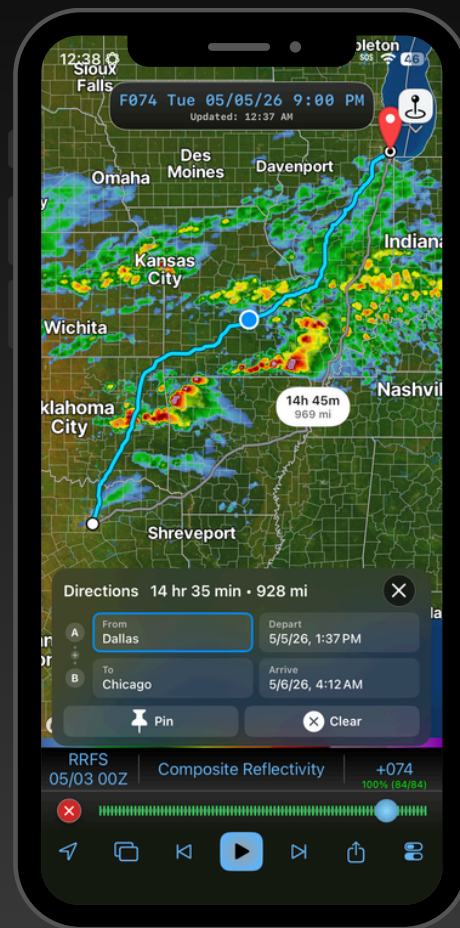
4. Investigate the sounding profile by pinching to zoom in
5. Use the arrow keys at the bottom to click backward and forward in time to watch the cap break or low-level jet get stronger.
6. Export the sounding loop and share it with your friends

App Tools Menu

Location Search / Route Planning



1. Click on the location pin icon in the App Tools Menu to begin
2. Select a location by (1) using the search bar or (2) long pressing anywhere on the map
3. Pin the location on the map or calculate a route from your current location by clicking Routes



4. Optionally edit your departure time, arrival time, or starting location
5. Add a waypoint by clicking the plus sign between A and B and repeating step 2
6. On the Models tab, press play and scroll through your route to determine what conditions to expect

Settings Menu



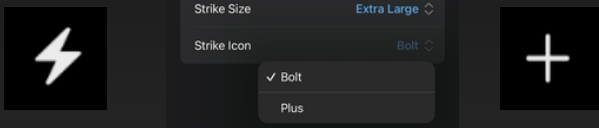
Bottom
Right
Icon



Layers Tab - Data Section

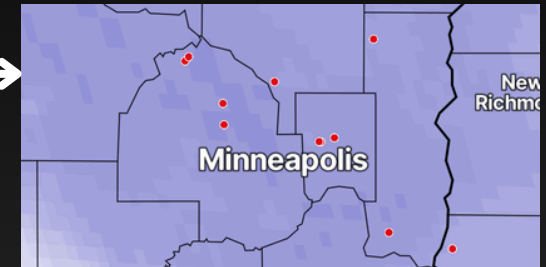
GOES-East GLM Strikes (Lightning)

- Adjust Strike Size & Strike Icon by clicking the blue circle



Spotters

- View spotter locations via Spotter Network



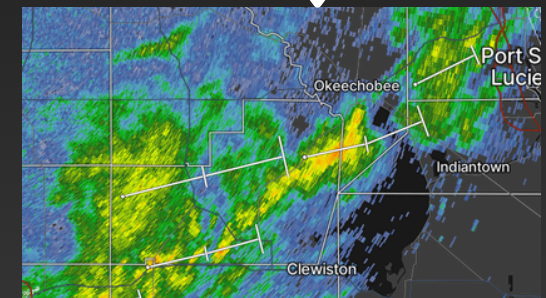
Storm Reports

- Filter by source (SPC/NWS or Spotter Network) & type



Storm Tracks

- Visualize storm motion and speed



METARs

- Click the blue text to configure which values display on the map



Loop Data

- GOES-East GLM Strikes
- METARs
- Storm Reports

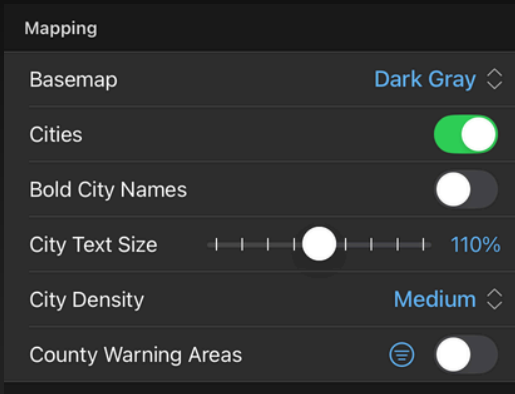
Settings Menu



Bottom
Right
Icon

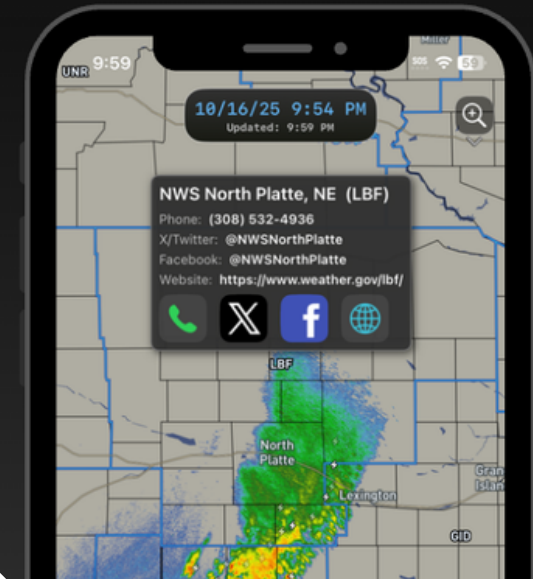


Layers Tab - Mapping Section



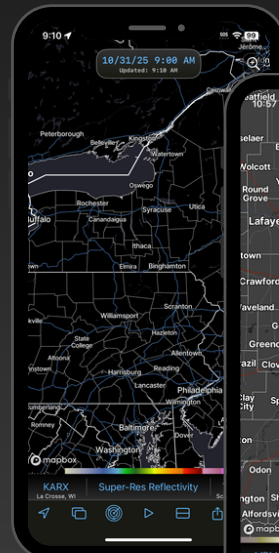
City Settings

- Toggle city names on/off
- Make city names bold so they stand out more
- Adjust text size and density

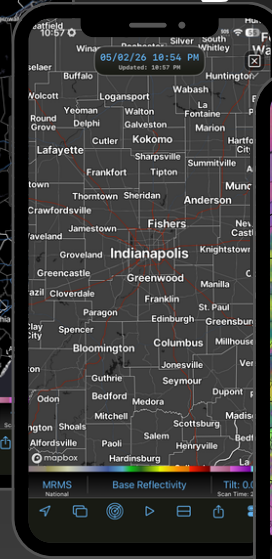


Basemaps

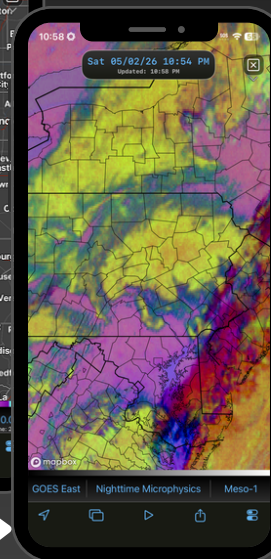
- Choose from the following:
 - Satellite
 - Satellite 2
 - Black
 - Dark Gray
 - Medium Gray
 - Medium Gray 2
 - Light Gray
 - White



Default City
Settings



Cities Off



Max City Density
Bold City Names

County Warning Areas

- Toggle on to view NWS office boundaries
- Click blue circle to toggle on WFO labels
- On map, click WFO labels to display contact info & send reports to an office

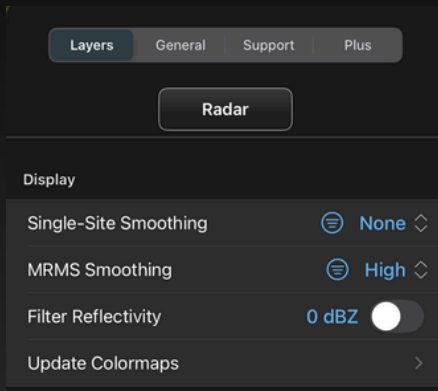
Settings Menu



Bottom
Right
Icon



Layers Tab - Display (Radar)

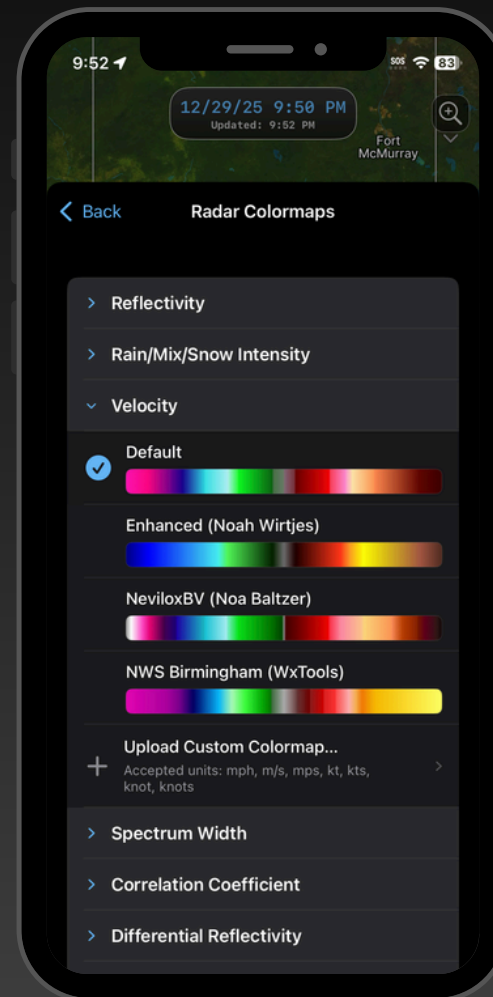
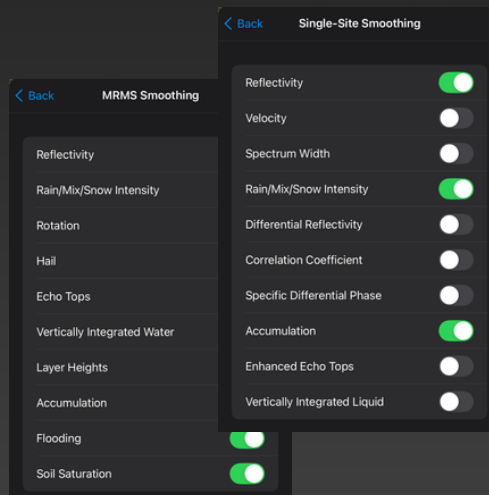


Filter Reflectivity

- Set minimum radar value to display in increments of 10 dBZ from -10 to +40

Smoothing

- Set level of smoothing for Single-Site radars and MRMS (national mosaic)
- Select which variables will be smoothed by clicking the adjacent blue circle



Update Colormaps

- Choose from defaults
- Download new colormaps from links at the bottom of the list
- Upload new colormaps in a .pal format by clicking the plus sign under each variable
- Delete colormaps by swiping left

[Custom Colormap Tutorial Video](#)

Web App Tutorial

WeatherFront

Main User Interface



1. Tools Menu

- A - Display GPS Location
- B - Draw Tool
- C - Sample
- D - Measure
- E - Radar Selector
- F - Multi-Pane

2. Data Tabs

Choose between:
Radar, Model, Satellite,
Observations,
Outlooks, and Mapping

Login

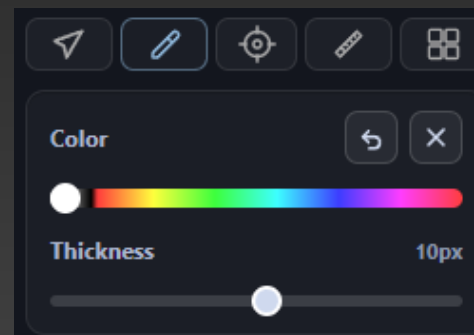
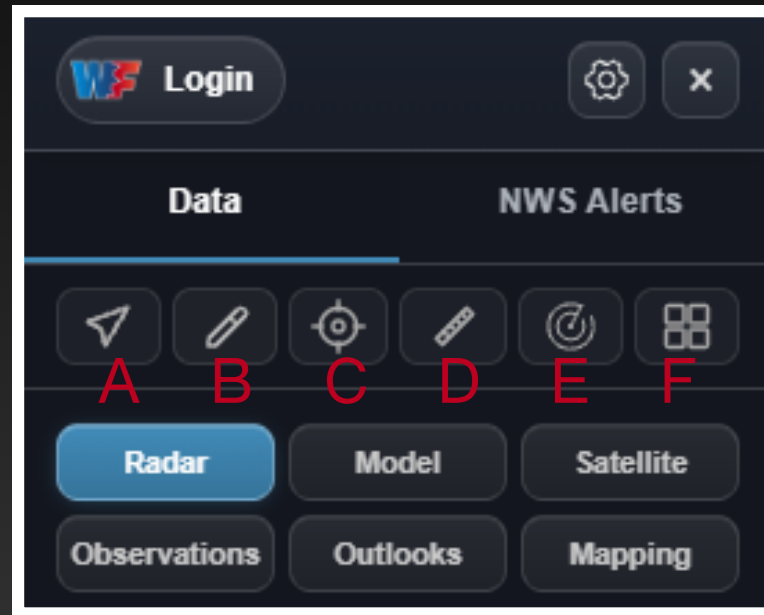
Sync subscriptions
& save settings

Settings

Adjust a variety of
display settings

NWS Alerts

Control settings for
Watches, Warnings,
and Advisories



B - Draw Tool

Choose any color
and thickness

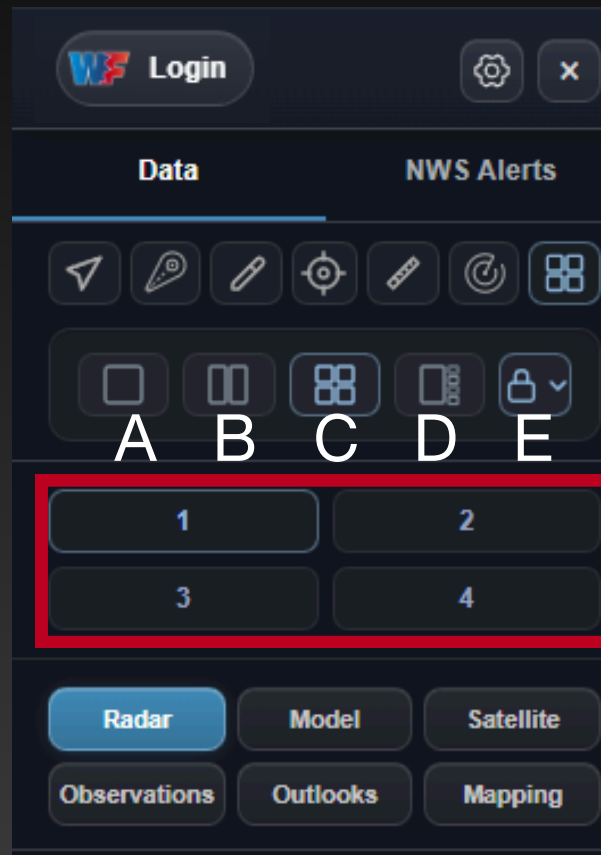
Main User Interface



Multi-Pane Controls

Multi-Panel Options

- A: Single Pane
- B: Dual-Pane
- C: Four-Pane*
- D: AWIPS-style 5 Pane*
- E: Lock View
 - *Lock or unlock map view, radar site, model, etc. across panels*



Click on the **panel number** to choose the data source

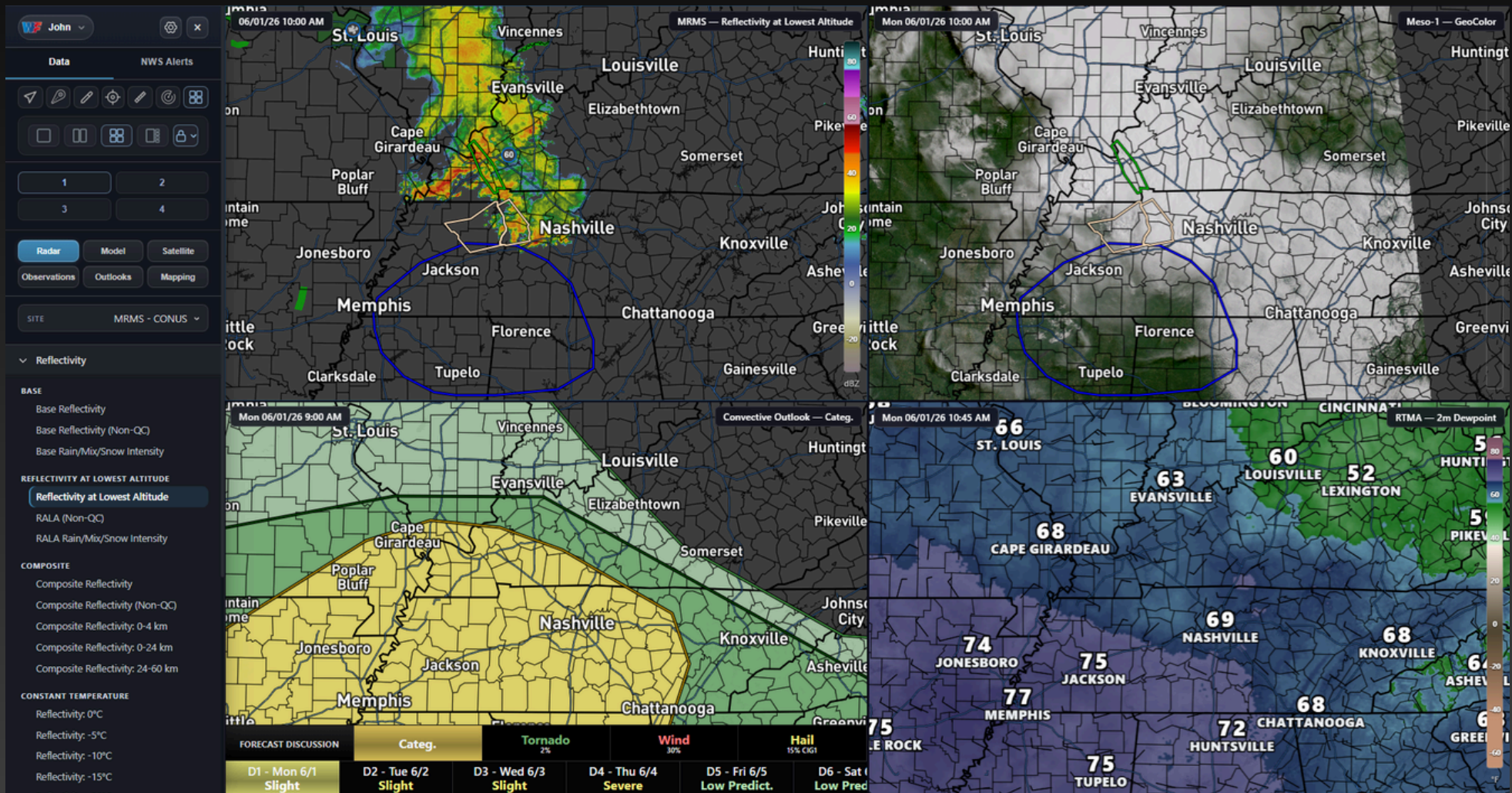
The WF Web app supports **full integration** across all data types

*Advanced Subscription Required

Main User Interface



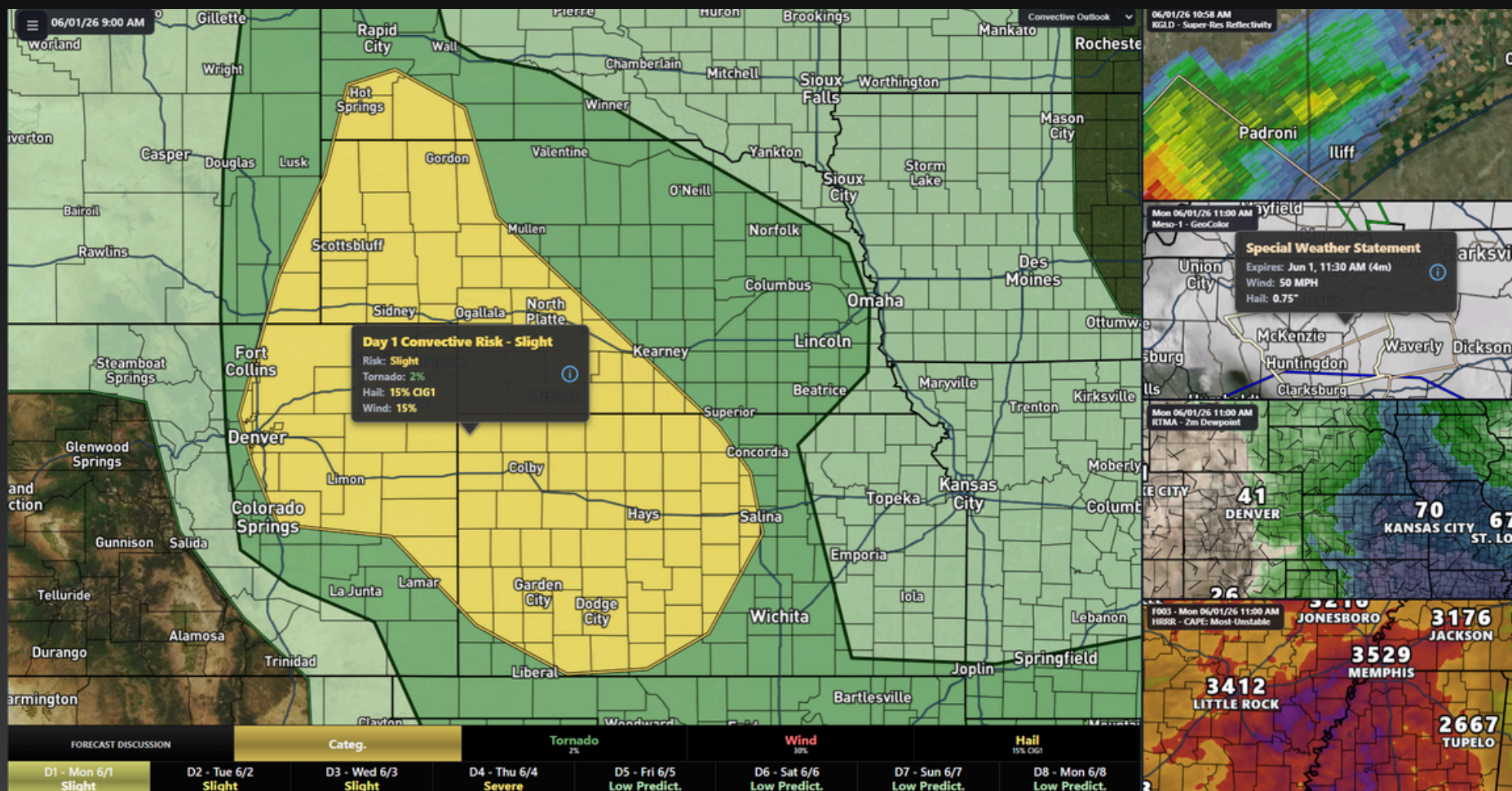
Four-Pane Example



Main User Interface



AWIPS 5-Pane Example



Left click on any of the **right panels** to swap with the **main panel**.

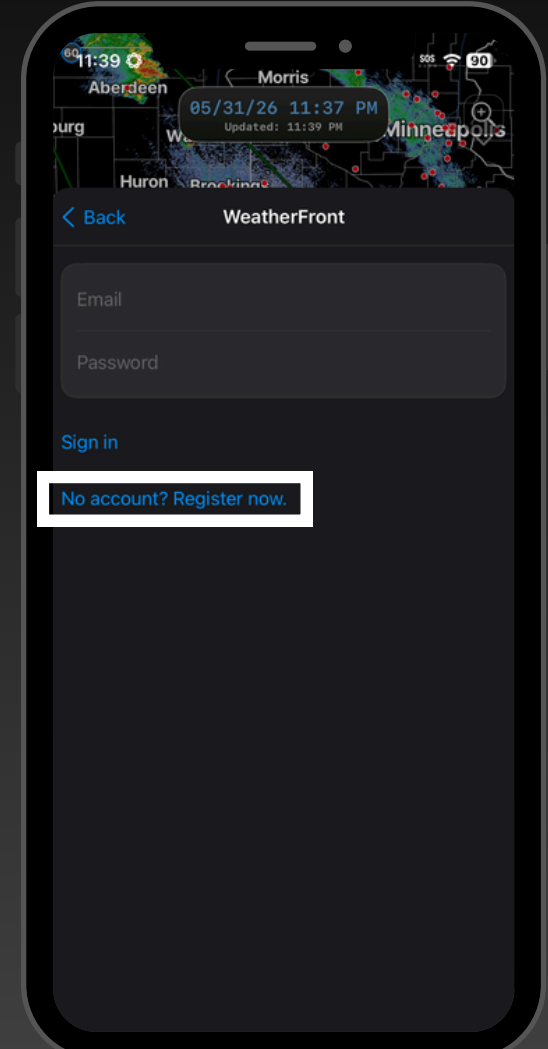
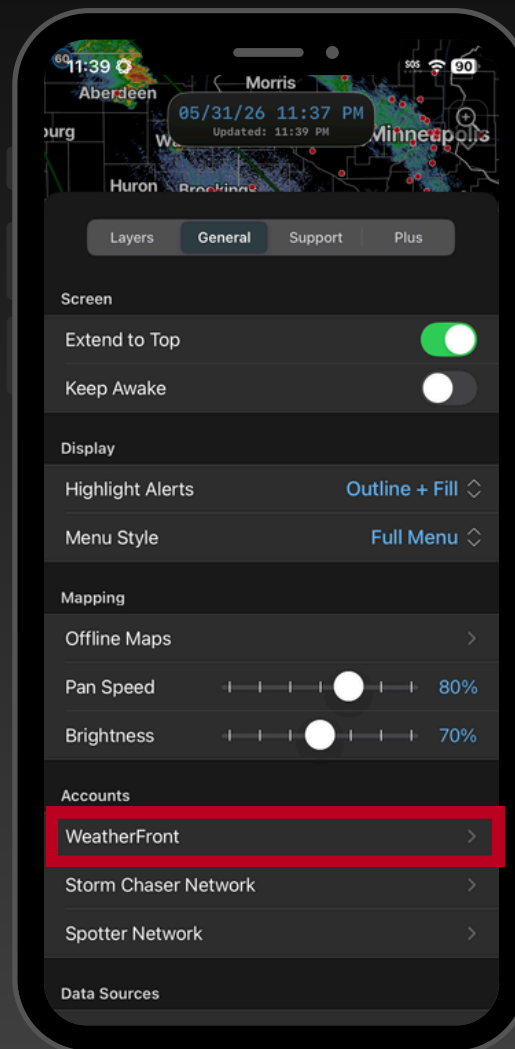
Account Setup & Syncing Across Devices

WeatherFront

WeatherFront Accounts

Creating an Account: iOS

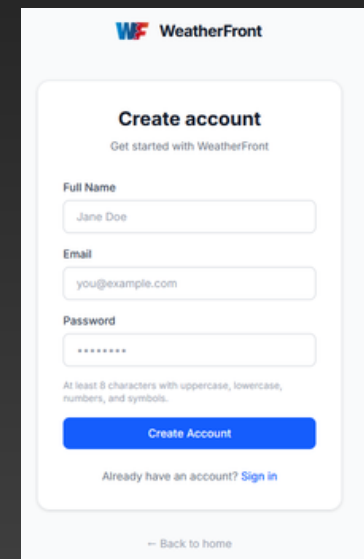
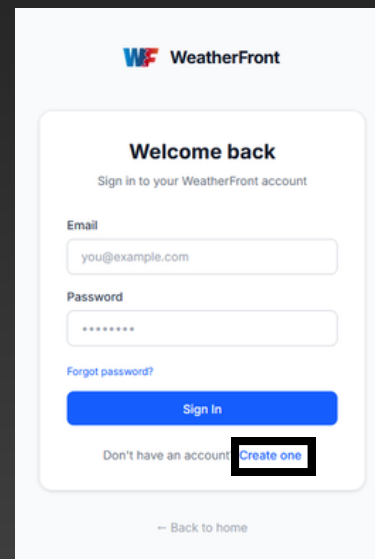
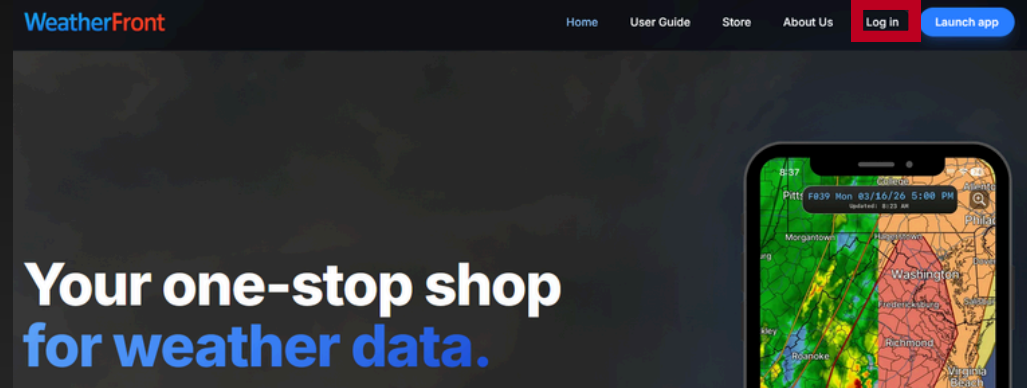
1. Download or Update WF:
 - a. Ensure you've installed *WeatherFront* [v1.22](#) or later
2. Navigate to the **General** tab
 - a. Access the menu using the slider bar icon at the lower right
3. Under the **Accounts** section, select **WeatherFront**
4. Click:
[No account? Register now.](#)
5. Skip to **step 3** on the next page.



WeatherFront Accounts

Creating an Account: Web

1. Go to www.weatherfront.com
 2. Click on **Log In** at the top right
 3. Below the Sign In button, next to Don't have an account?
Click: [Create one](#)
 4. Enter your Full Name, Email, and create a Password.
 5. Click [Create Account](#)
 6. Check your email for a Verification Code & type it in
- CONGRATS! You created an account!**

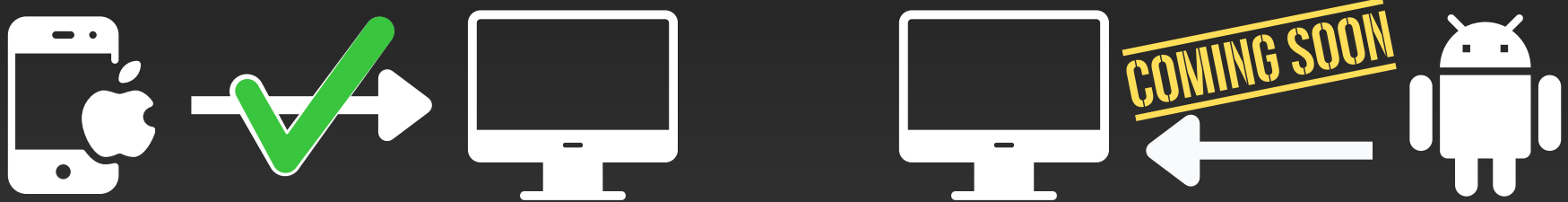


WeatherFront Accounts

Cross-Platform Compatibility

Subscription Details:

- A WeatherFront Advanced subscription is \$9.99/month or \$99.99/year
- In order to access all of WF Advanced features on the web app, you'll need to be subscribed either through iOS (App Store) or Android (Play Store).



- An Advanced subscription will NOT port between iOS and Android.



WeatherFront Accounts



Subscription Syncing

1. Once you've signed into your account at www.weatherfront.com/login, navigate to the SUBSCRIPTION section (bottom left)
2. Click on [See how](#) →
3. Choose the platform you'd like to use (Apple or Android)!

SUBSCRIPTION


WeatherFront Free


Subscriptions available on the WeatherFront mobile apps

Subscribe on your mobile device and link to this account to access your Advanced subscription on weatherfront.com.

[See how →](#)

Subscribe on mobile

 **Apple**
iPhone or iPad. Available now.
[Link to Apple →](#)

 **Android**
Phone or tablet. Coming soon.
[Link to Android →](#)

WeatherFront Accounts

Subscription Syncing: iOS

1. Get the WeatherFront app on iPhone or iPad
2. Choose a subscription plan (annual or monthly)
 - a. In the WeatherFront mobile app, navigate to: Settings > Plus
 - b. If you've already subscribed, you can skip ahead to step 3 to link your subscription.
3. Link your subscription
 - a. In the WeatherFront mobile app, navigate to: Settings > General > Accounts (WeatherFront)
 - b. Sign in with the email you used to create your account
 - c. Tap Link Subscription.

After linking, WeatherFront Advanced will be active on www.weatherfront.com within a few seconds.


WeatherFront Accounts

Subscription Syncing: Android

Gain temporary FREE access to all web features while Android is in development by sharing your email with us!

We'll notify you when the Android app is ready!

Android, coming soon!

**Android Launch Pass** FREE WEB ACCESS
Temporary web access while Android is in development

- ✓ Access WeatherFront Advanced on the web until Android launches
- ✓ Email notification when the Android app is ready

[Sign in or sign up →](#)

We'll use your account email to notify you when the Android app is ready.

We're working on more content!

In the meantime, check out these resources:



[WF Tutorial Playlist](#)



[Search #WFFeatureFriday on X](#)

Still have questions?

Send an email to support@wxfront.com!

WeatherFront